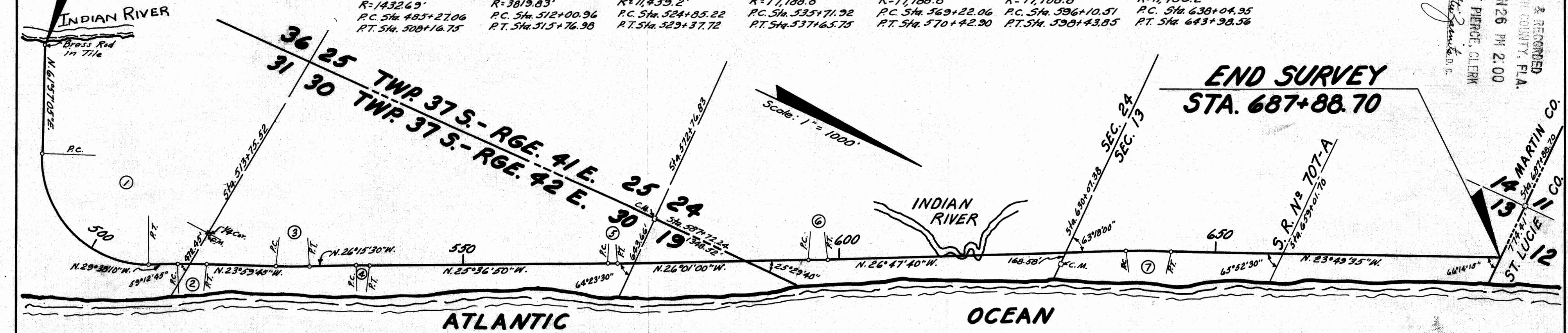


File No. 52542

BEGIN SURVEY
STA. 470+82.62

CURVE No 1	CURVE No 2	CURVE No 3	CURVE No 4	CURVE No 5	CURVE No 6	CURVE No 7
P.I. Sta. 500+00.00	P.I. Sta. 513+89.13	P.I. Sta. 527+11.50	P.I. Sta. 536+68.59	P.I. Sta. 549+82.48	P.I. Sta. 597+27.18	P.I. Sta. 641+01.82
$\Delta = 91^{\circ}35'15''$ Lt.	$\Delta = 5^{\circ}38'25''$ Rt.	$\Delta = 2^{\circ}15'45''$ Lt.	$\Delta = 0^{\circ}38'40''$ Rt.	$\Delta = 0^{\circ}24'10''$ Lt.	$\Delta = 0^{\circ}46'40''$ Lt.	$\Delta = 2^{\circ}58'05''$ Rt.
D = 4'00"	D = 1'30"	D = 0'30"	D = 0'20"	D = 0'20"	D = 0'20"	D = 0'30"
T = 1472.94'	T = 188.17'	T = 226.28'	T = 96.67'	T = 60.42'	T = 116.67'	T = 296.87'
L = 2289.69'	L = 376.02'	L = 452.50'	L = 193.33'	L = 120.84'	L = 233.34'	L = 593.61'
R = 1432.69'	R = 3819.83'	R = 11459.2'	R = 17188.8'	R = 17188.8'	R = 17188.8'	R = 11459.2'
P.C. Sta. 485+27.06	P.C. Sta. 512+00.96	P.C. Sta. 524+85.22	P.C. Sta. 535+71.92	P.C. Sta. 569+22.06	P.C. Sta. 596+10.51	P.C. Sta. 638+04.95
P.T. Sta. 500+16.75	P.T. Sta. 515+76.98	P.T. Sta. 529+37.72	P.T. Sta. 537+65.75	P.T. Sta. 570+42.90	P.T. Sta. 598+43.85	P.T. Sta. 643+98.56

FILED & RECORDED
IN MARTIN COUNTY, FLA.
1956 JUN 26 PM 2:00
DOROTHY PIERCE, CLERK
By *[Signature]*
D. C.



We, Ralph Davis, as Director of the State Road Department of the State of Florida, and L. A. Fraleigh, as Secretary of State Road Department of the State of Florida, do hereby certify that this map is the Official Map of Location and Survey of a portion of Section 8904, designated as a part of State Road A-1-A in Martin County, Florida: Said portion of Section 8904 extending from a point in Section 31, Township 37 South, Range 42 East at Indian River, Northwesterly to St. Lucie County line.

Filed for record in the Office of the Clerk of the Circuit Court for the County of Martin, State of Florida, in Map Book 3, Page 48, on the 26th day of June, A. D. 1956.

Prepared and adopted by the State Road Department of the State of Florida under provisions of Section 341.47, Florida Statutes of 1941.

Ralph Davis
Director, State Road Department

Attest: *[Signature]*
Secretary, State Road Department

Approved: *[Signature]*
Asst State Highway Engineer

Date: January 5, 1956

[Signature]
Clerk of the Circuit Court
Martin County, Florida
By *[Signature]*, D. C.
Section 8904 Rd. A-1-A Martin County Fla.